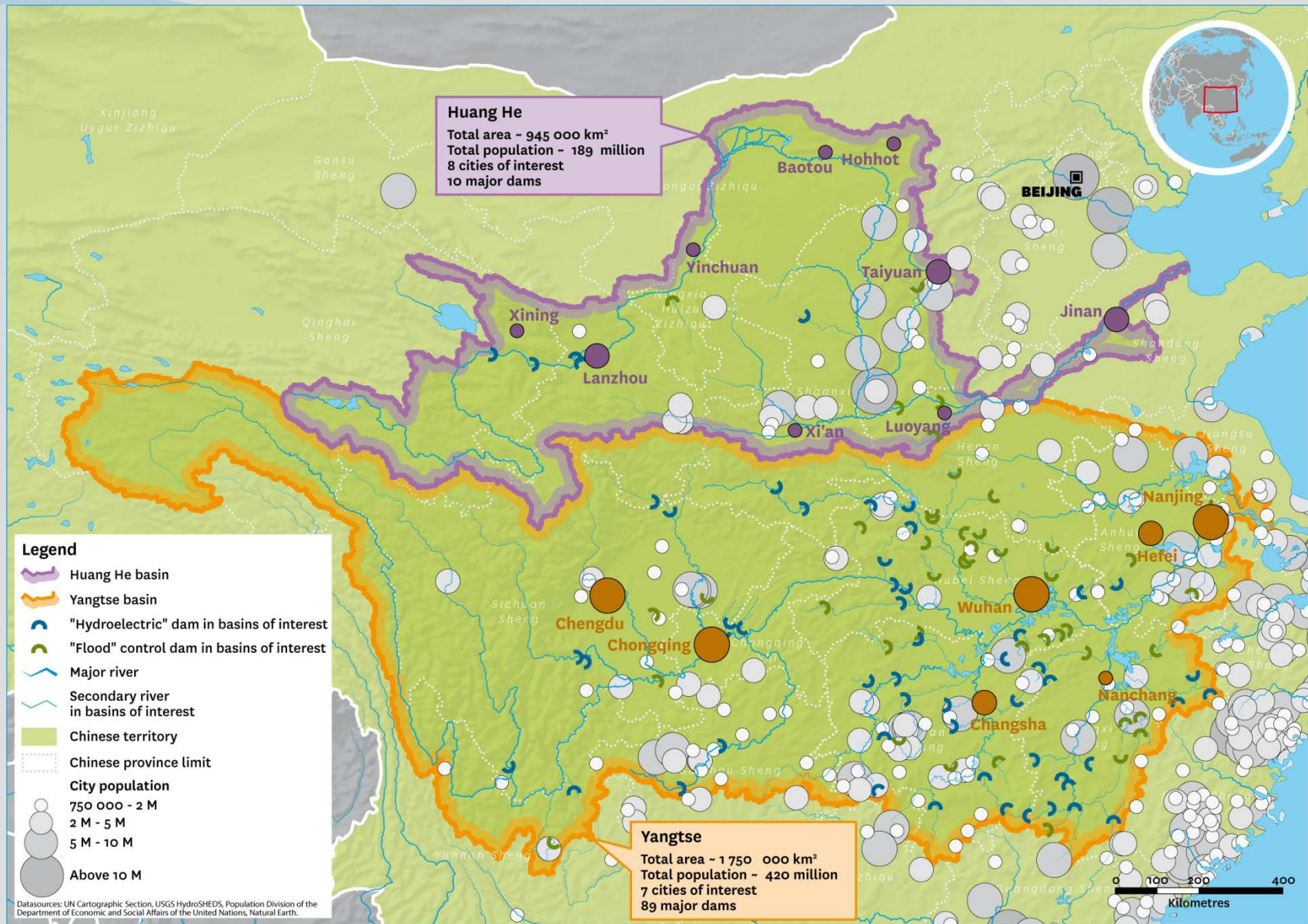
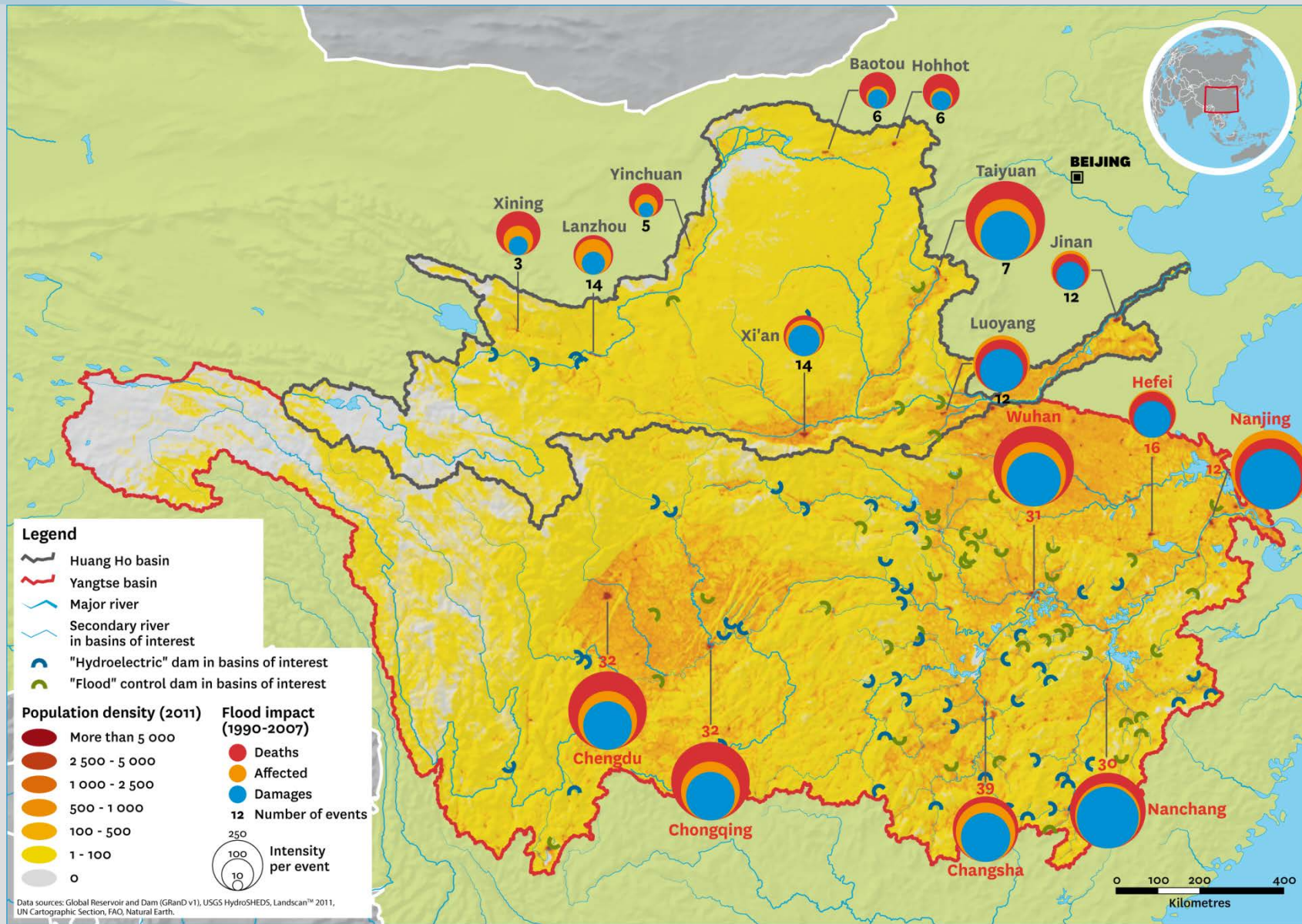


# **Co-evolutions Between Mega-Cities' Development and the Vulnerability to Floods: Lessons from the Yangtze and the Yellow River**

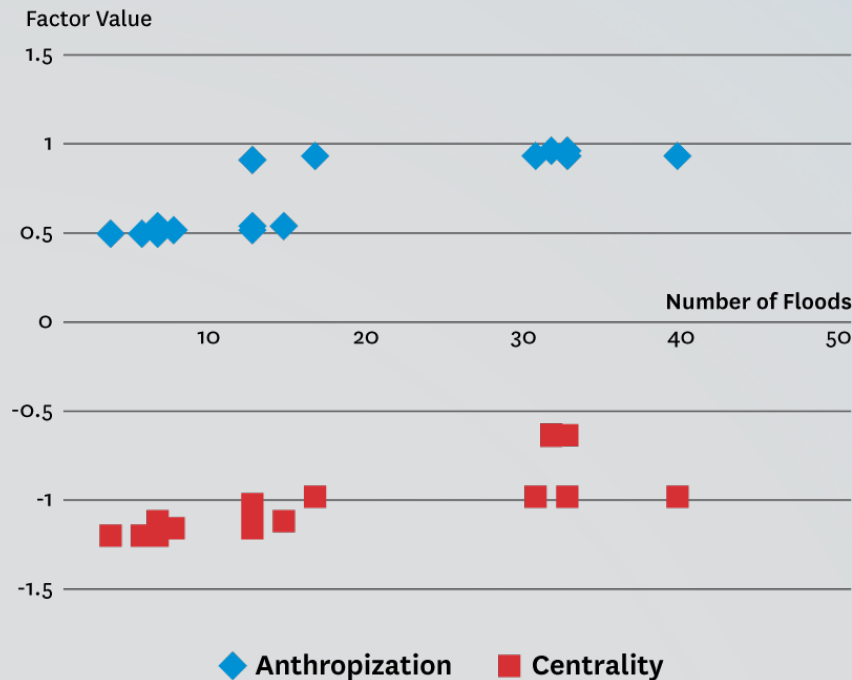




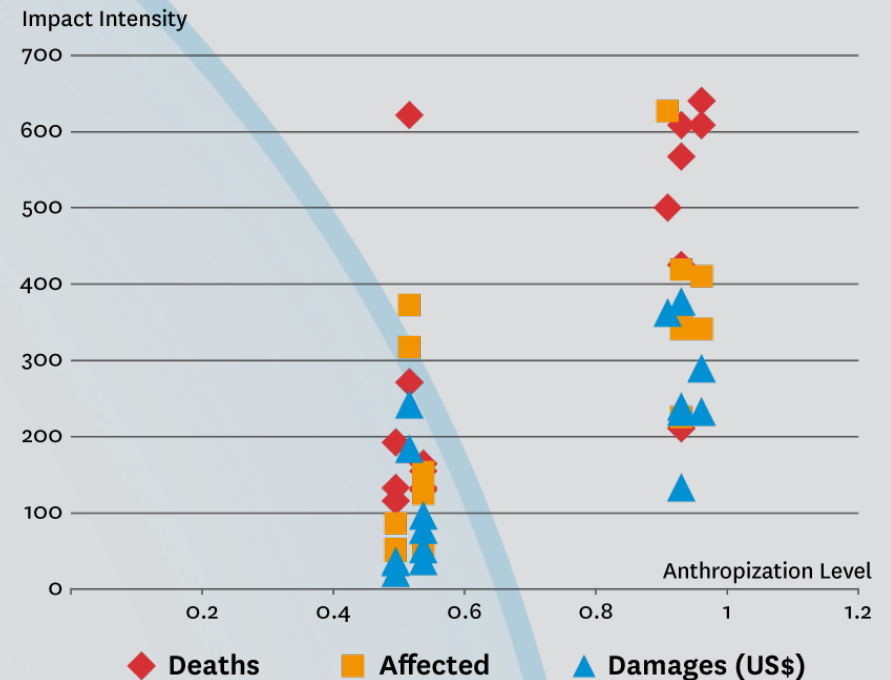
# Results

- A positive relation between urban characteristics and vulnerability to floods is observed

### Urbanization & floods

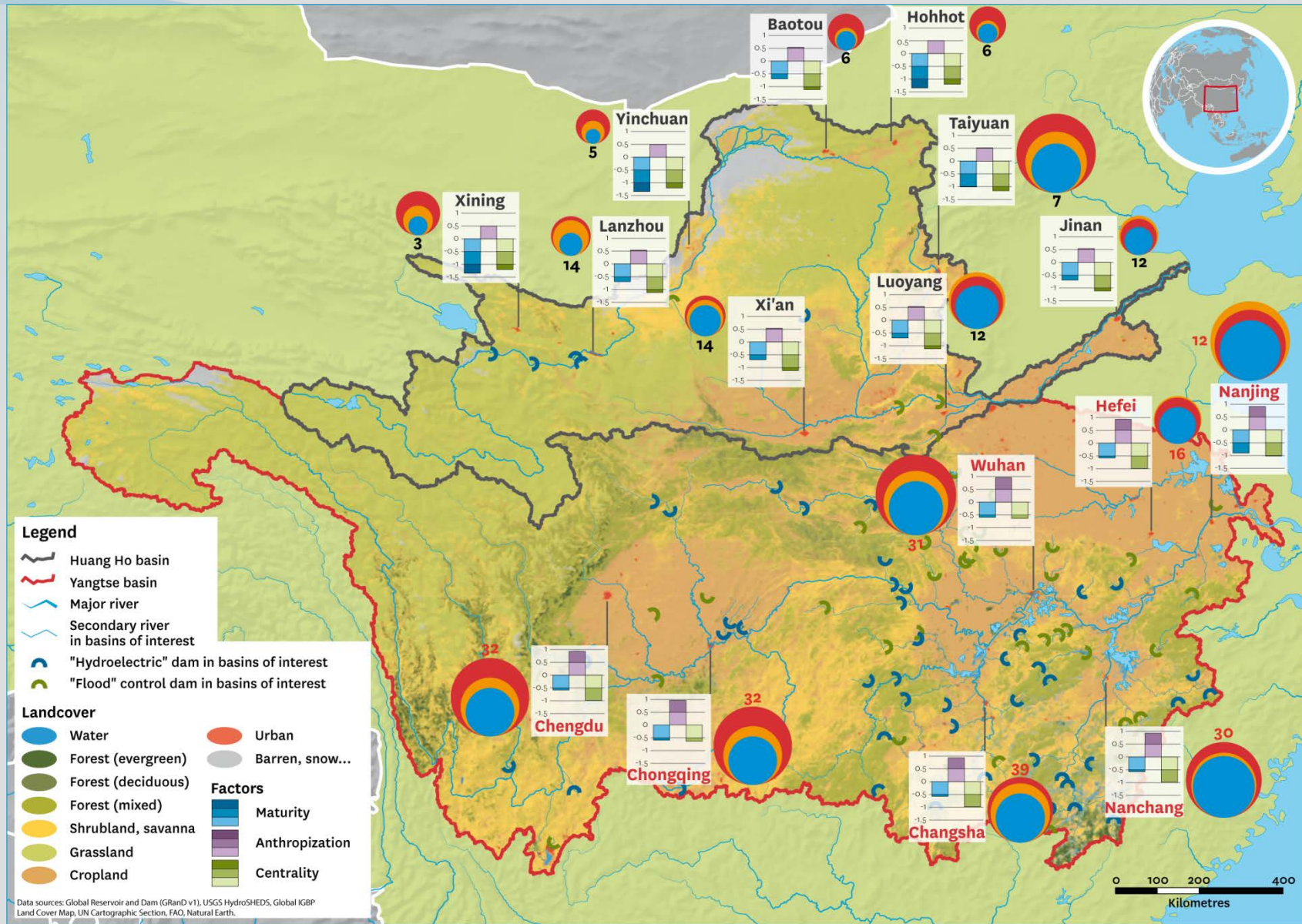


### Anthropization & flood intensity



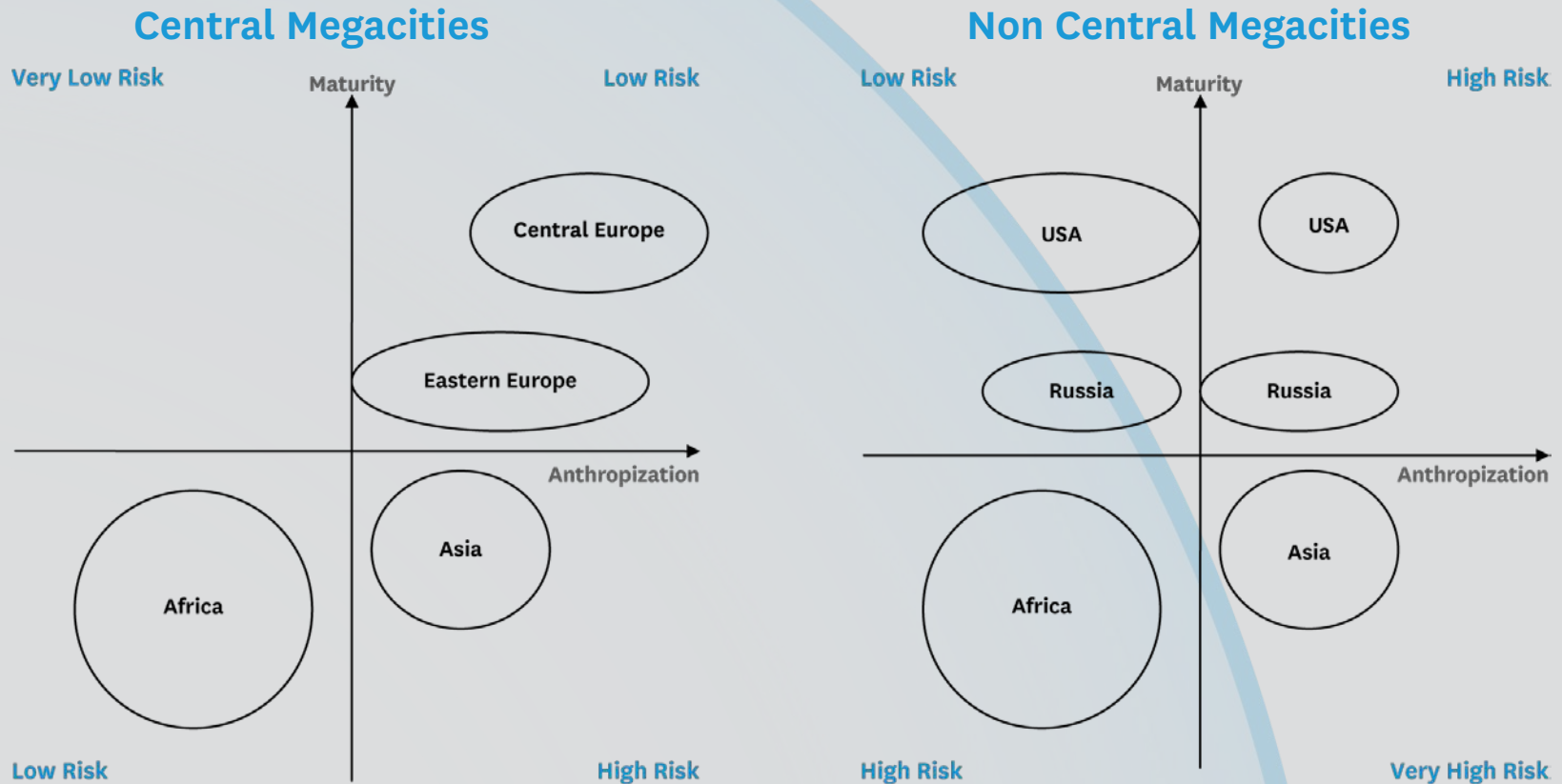
# Discussion

- **Diversity in the type of impact**
  - Each factor interacts on its own way with the variables of intensity of flood impact
  - There is no correlation between the variables of intensity of impacts
- **Public policies have to be put in their context**
  - Take into account the geographic and socio-economic territories
- **Three characteristics to compare megacities worldwide**



# Discussion (extension to the global scale)

- Toward identifying urbanization and vulnerability models? Milestones for a typology (Bolognesi 2014)



# References

- Adger N. 2006. Vulnerability. *Global Environmental Change* 16: 268-281.
- Bolognesi T. 2014. The Water Vulnerability of Metro and Megacities: An Investigation of Structural Determinants. *Natural Resource Forum*, Online preview.
- Kallis G., Norgaardb RB. 2010. Coevolutionary Ecological Economics. *Ecological Economics* 69 (4): 690-699.
- Gunderson L.H., Holling CS. dir 2002. *Panarchy: Understanding Transformations in Human and Natural Systems*. Island Press, Washington.
- Pelling M. 2003. *The Vulnerability of Cities. Natural Disasters and Social Resilience*. Earthscan, London.
- World Resource Institute (2003) *Watershed of the World at [multimedia.wri.org/watersheds\\_2003](http://multimedia.wri.org/watersheds_2003)*
- WWF at [wwf.panda.org/about\\_our\\_earth/about\\_freshwater/rivers](http://wwf.panda.org/about_our_earth/about_freshwater/rivers)